

## Data for 16-Inch Balanced Combiner Modules

Includes Models 2540-16-1/3, 2540-16-1/4, 2540-16-1/6, 2540-16-3/3, 2540-16-3/4, & 2540-16-3/6

### Performance Specifications

Type:	Resonant Cavity	
Size:	16"	
No. of Cavities per Filter:	4	
Typical VSWR	at $\pm 100$ kHz:	1.04:1
	at $\pm 150$ kHz:	1.04:1
	at $\pm 200$ kHz:	1.08:1
Typical Insertion Loss:	-0.35 dB	
Typical Frequency Response (deviation from center frequency)	at $\pm 100$ kHz:	-0.01 dB
	at $\pm 150$ kHz:	-0.02 dB
	at $\pm 200$ kHz:	-0.05 dB
Typical Group Delay (deviation from center frequency)	at $\pm 100$ kHz:	30 nsec
	at $\pm 150$ kHz:	50 nsec
	at $\pm 200$ kHz:	150 nsec
Typical Bandwidth:	$\pm 200$ kHz	
Spur Rejection, $\pm 800$ kHz or greater:	Greater than 80 dB	



### Power Ratings:

		2540-16-1/3	2540-16-1/4	2540-16-1/6	2540-16-3/3	2540-16-3/4	2540-16-3/6
Maximum Filter Input Power:		15 kW			20 kW		
Maximum Power through Output Hybrid:	Average	40 kW	80 kW	160 kW	40 kW	80 kW	160 kW
	Peak	440 kW	700 kW	1500 kW	440 kW	700 kW	1500 kW

### Inputs, Outputs, and Weight:

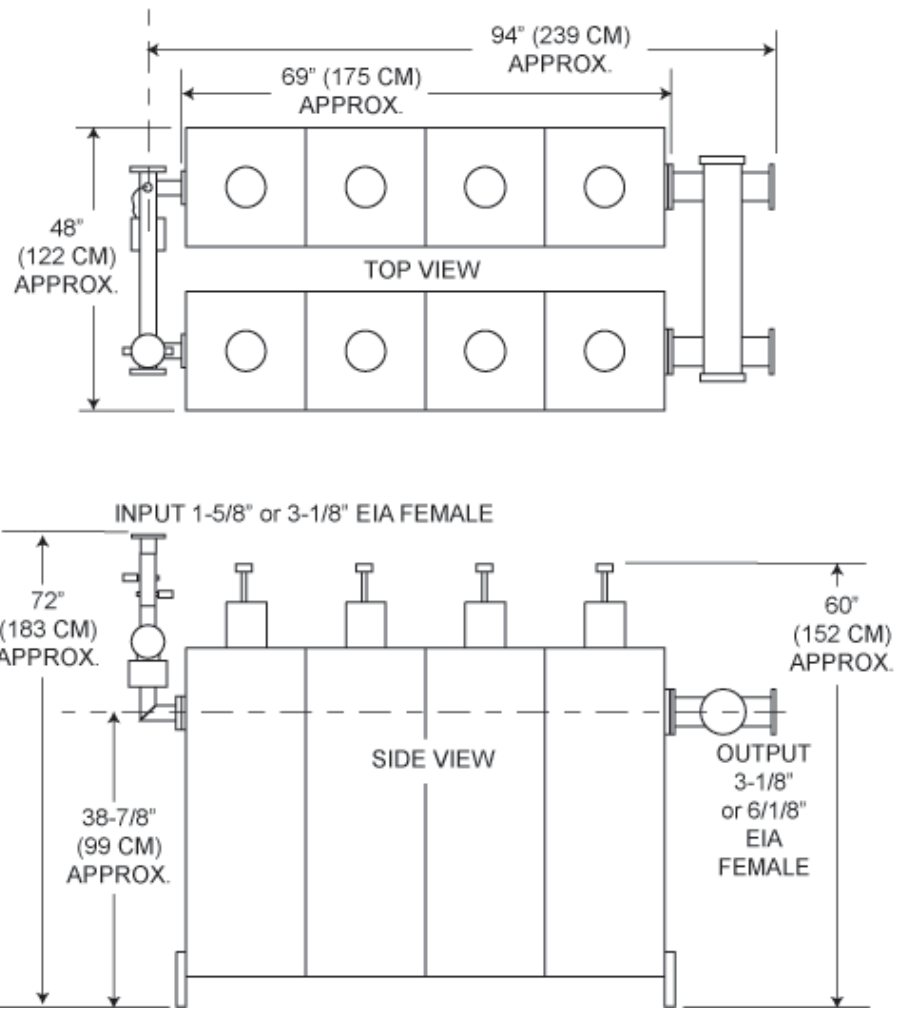
	2540-16-1/3	2540-16-1/4	2540-16-1/6	2540-16-3/3	2540-16-3/4	2540-16-3/6
Input Connection:	1-5/8" EIA			3-1/8" EIA		
Input Hybrid:	1-5/8" EIA			3-1/8" EIA		
Output Connection:	3-1/8" EIA	4-1/16" flange or 6-1/8" EIA	6-1/8" EIA	3-1/8" EIA	4-1/16" flange or 6-1/8" EIA	6-1/8" EIA
Output Hybrid:	3-1/8" EIA	4-1/16"	6-1/8" EIA	3-1/8" EIA	4-1/16"	6-1/8" EIA
Shipping Weight:	1100 lb (500 kg)	1150 lb (523 kg)	1200 lb (545 kg)	1200 lb (545 kg)	1250 lb (568 kg)	1300 lb (591 kg)

Document No. ds-2540-16 (070801)

A Division of Howell Laboratories, Inc., P. O. Box 389, Bridgton, Maine 04009 USA  
 (207) 647-3327 1-888-SHIVELY Fax: (207)647-8273  
 An Employee-Owned Company

www.shively.com  
 sales@shively.com  
 Certified to ISO-9001:2000

Dimensions:



**NOTE**

Module includes a 1-5/8" or 3-1/8" precision input directional coupler as standard equipment.