

Data for 24-Inch Balanced Combiner Modules

Includes: Models 2540-24-3/4, 2540-24-3/6, and 2540-24-3/9

Performance Specifications

Type:	Resonant Cavity	
Size:	24"	
No. of Cavities per Filter:	4	
Typical VSUR	at ± 100 kHz:	1.04:1
	at ± 150 kHz:	1.04:1
	at ± 200 kHz:	1.08:1
Typical Insertion Loss:	-0.30 dB	
Typical Frequency Response (deviation from center frequency)	at ± 100 kHz:	-0.01 dB
	at ± 150 kHz:	-0.02 dB
	at ± 200 kHz:	-0.05 dB
Typical Group Delay (deviation from center frequency)	at ± 100 kHz:	25 nsec
	at ± 150 kHz:	50 nsec
	at ± 200 kHz:	150 nsec
Typical Bandwidth:	± 200 kHz	
Spur Rejection, ± 800 kHz or greater:	Greater than 80 dB	



Power Rating:

		2540-24-3/4	2540-24-3/6	2540-24-3/9
Maximum Filter Input Power:		40 kW		
Maximum Power through Output Hybrid:	Average	80 kW	160 kW	320 kW
	Peak	700 kW	1500 kW	3200 kW

Inputs, Outputs, and Weight:

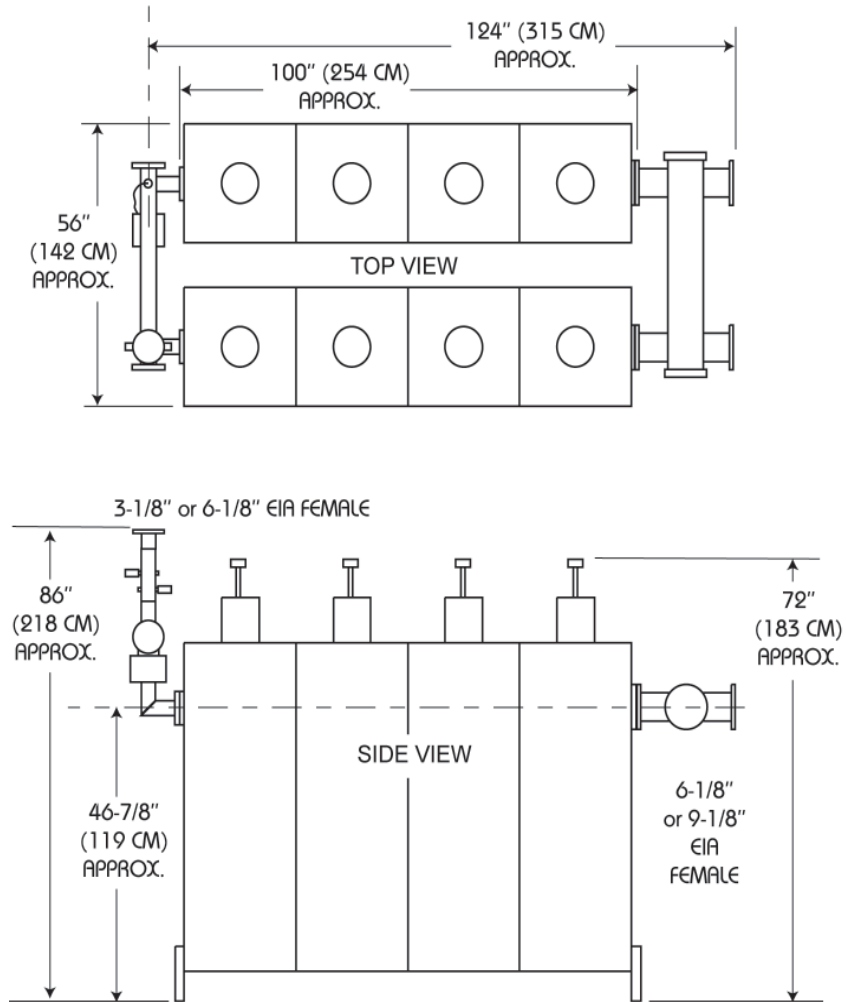
	2540-24-3/4	2540-24-3/6	2540-24-3/9
Input Connection:	3-1/8" EIA	3-1/8" EIA	3-1/8" EIA
Input Hybrid:	3-1/8" EIA	3-1/8" EIA	3-1/8" EIA
Output Connection:	4-1/16" flange or 6-1/8" EIA	6-1/8" EIA	9-1/8" EIA
Output Hybrid:	4-1/16"	6-1/8" EIA	9-1/8" EIA
Shipping Weight:	1400 lb (636 kg)	1500 lb (682 kg)	1800 lb (818 kg)

Document No. ds-2540-24 (070525)

A Division of Howell Laboratories, Inc., P. O. Box 389, Bridgton, Maine 04009 USA
 (207) 647-3327 1-888-SHIVELY Fax: (207)647-8273
 An Employee-Owned Company

www.shively.com
 sales@shively.com
 Certified to ISO-9001:2000

Dimensions:



NOTE

Module includes 3-1/8" precision input directional coupler as standard equipment.