

Replacing a Bay on a Model 6812 or 6812B with Radomes

NOTE

This procedure applies equally to the original 6812 and to the new-style 6812B antennas.

Remove the Existing Bay from the Pole.

The mounting pole may be removed from the tower before the antenna is removed from the pole - or not. Your choice.

- Disconnect the cable from the Type "N" input.
- Remove the two U-bolts and remove the bay assembly from the mounting pole.

Remove the Radome Top Half.

- Remove the 1/4-20 hardware from the radome flange.
- Remove the bolts securing the top radome mount to the radome backplate and formed channel.
- Separate the radome halves, lifting the top radome half off the bay.

CAUTION

Be very careful not to damage or distort the feedstrap. The radiator will not perform properly if the feedstrap is damaged or moved in any way.

Remove the Existing Radiator from the Radome Backplate.

- Remove the two mounting bolts securing the bay to the radome backplate. Don't lose the 3/16"-thick spacer plate!

Install the New Radiator.

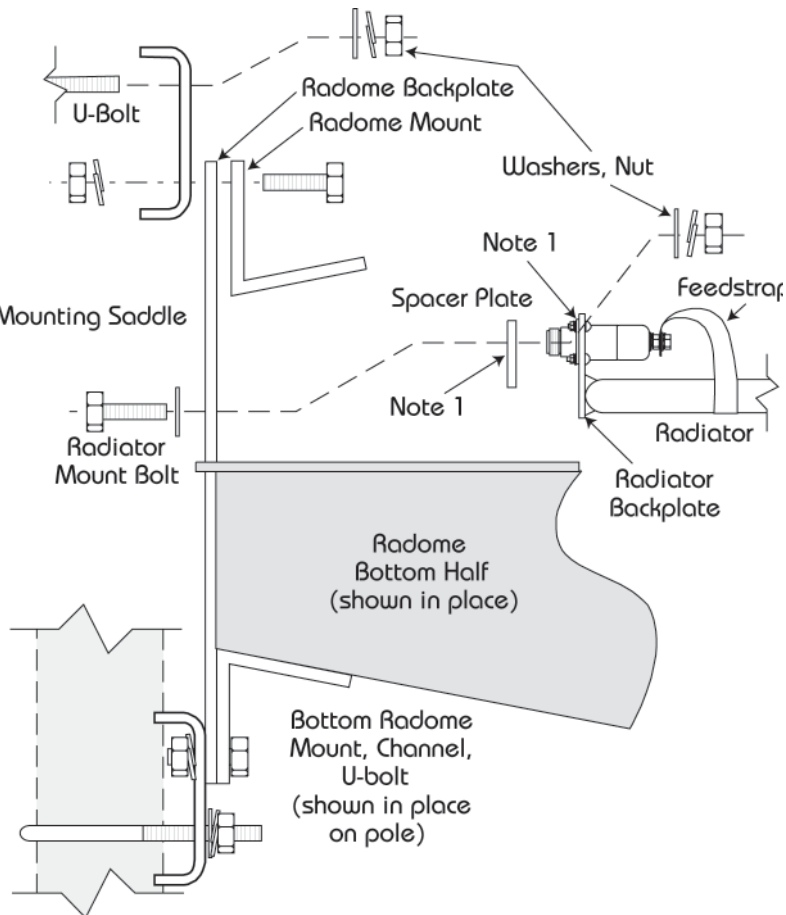


Figure 1. Radiator/Radome Assembly, exploded view

CAUTION

The entire assembly must be reinstalled exactly as it was. The radiator mounting holes are above center in the radome backplate, the spacer plate, and the radiator backplate!

- Install the new radiator to the radome backplate, with the spacer plate in between.
- Reinstall the radome top half over the radiator and behind the radiator backplate. Bolt the radome flanges back together.
- Reassemble the radome mount, the radome backplate, and the formed channel, using the bolts removed in step d.
- Seal around the radome and the Type "N" connector, using the RTV sealant provided

Reinstall the Assembly on the Pole.

- Reinstall the bays on the pole. Be sure to mount the bays right-side up (radome drain holes at the bottom).
- Reconnect the cable to the Type "N" connector.

Document No. ts-6812r_bay_replacement (0611)

A Division of Howell Laboratories, Inc., P. O. Box 389, Bridgton, Maine 04009 USA

(207) 647-3327

1-888-SHIVELY

Fax: (207)647-8273

An Employee-Owned Company

www.shively.com

sales@shively.com

Certified to ISO-9001:2000