

Retrofitting a Standard Radome on a Model 6813 with Deicers

The antenna must be removed from the tower for this procedure. Perform the following steps for each antenna bay.

WARNING

Whenever a rigger is on the tower in the area of the antenna, shut off the power and lock it off so that it cannot be turned on accidentally.

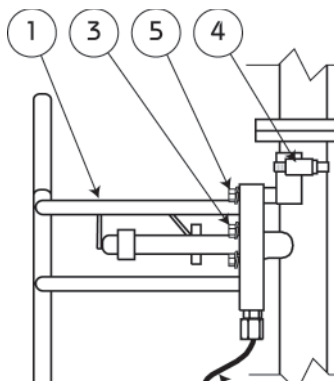
- Shut off all power to the antenna and electrical power to the deicers.

Remove the Antenna from the Tower (figure 1).

CAUTION

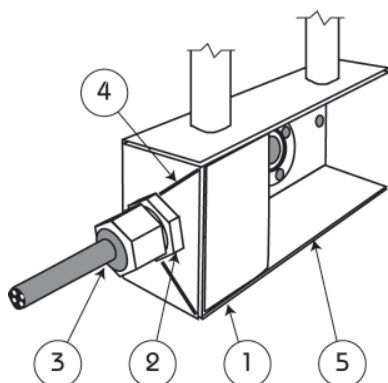
Do not disturb the feed-strap (1) at any time during this process. If you do, the antenna will not perform well.

- Cut or disconnect the deicer electrical lead (2).
- Remove the nuts and washers (3) from the three baymount studs, to release the bay from the feedline.
- Remove the hose clamp (4) securing the mounting saddle to the feedline. Remove the bay.
- Unbolt (5) the mounting saddle from the antenna assembly. Discard the saddle.



Remove the Deicer Components (figure 2).

- Remove the cover plate (1).
- Remove the T&B fitting (2) from the bottom of the housing.
- Cut the electrical leads (3) short so they will not be in the way.
- Cover the bay input to protect it from saw chips. Using a hacksaw, cut a wide notch in the housing, approximately as shown by the dotted line (4) in the figure.



Install the Radome (figure 3).

- Identify the top radome half (1) by its wide, overlapping mating flange and the bottom radome half (2) by its narrow

mating flange and drain holes. Make sure that the stenciled numbers on the radome halves match the number on the feedline section and the antenna bay.

- Separate the top radome mount (3) into its two parts by removing the two bolts. Keep the hardware for reinstallation.

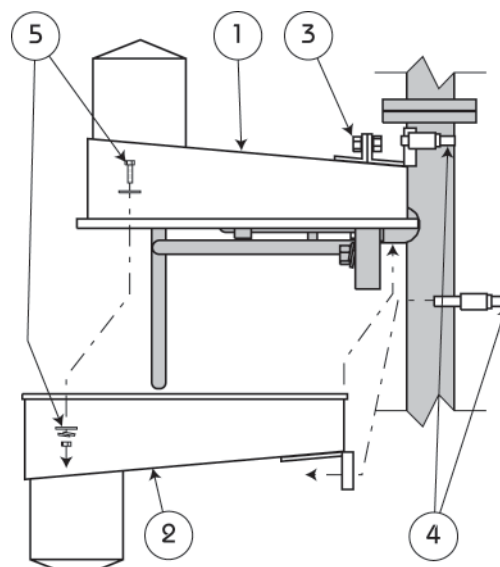
NOTE

The radome half has a double notch under the mount; the larger outer notch fits over the feedline and the smaller inner notch fits against the baymount.

NOTE

If retrofitting radomes to an older antenna (pre-1994), you will have to grind about 1/8" off the edges of the back channel (5, figure 2) of each radiator to make room for the thickness of the radome under the radiator.

- Carefully place the top radome half in place, slipping it over the radiator and up against the baymount.
- Slip the removed part of the radome mount into place. Bolt it to the radome half and then lightly clamp it to the feedline with a hose clamp (4).
- Carefully place the bottom radome half in place, slipping it under the radiator and up against the baymount, with its flange inside the larger flange of the upper radome half. Lightly clamp it to the feedline with a hose clamp (4).
- Fasten the two radome halves together loosely with the 1/4"-20 hardware (5): a bolt, a nut, 2 flat washers and a lock-washer for each hole, starting near the feedline and working around both sides to the outer edge. (It may be necessary to squeeze the radome flanges together to start the nuts.) Tighten all hardware securely.
- Seal the joint where the radome encircles the baymount with the silicone caulk supplied with the antenna.
- Remove the unused deicer electrical leads and power supply to prevent injury or equipment damage.



Document No. ts-6813d_radome_retrofit (0611)

A Division of Howell Laboratories, Inc., P. O. Box 389, Bridgton, Maine 04009 USA

(207) 647-3327

1-888-SHIVELY

Fax: (207)647-8273

An Employee-Owned Company

www.shively.com

sales@shively.com

Certified to ISO-9001:2000