

Retrofitting a Radome on a Model 6813 Antenna

The radome retrofit may be done without removing the antenna from the tower.

WARNING

Whenever a rigger is on the tower in the area of the antenna, shut off the power and lock it off so that it cannot be turned on accidentally.

- a. Shut off all power to the antenna.

Remove the Mounting Saddle (see figure 1)

CAUTION

Do not disturb the feedstrap (1) at any time during this process. If you do, the antenna will not perform well.

- b. Unbolt the mounting saddle (2) from the antenna assembly. Remove the hose clamp (3) securing the mounting saddle to the vertical feedline and remove and discard the saddle.

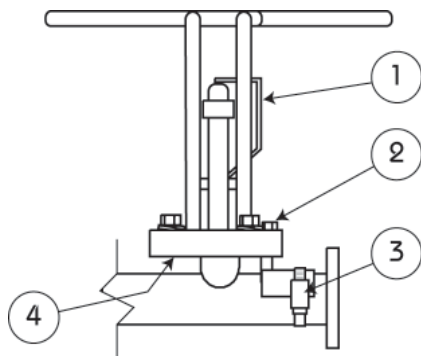


Figure 1. Removing the Mounting Saddle

Install the Radome (see figure 2)

- c. Identify the top radome half (1) by its wide, overlapping mating flange and the bottom radome half (2) by its narrow mating flange and drain holes. Make sure that the stenciled numbers on the radome halves match the number on the feedline section.
- d. Separate the top radome mount (3) into its two parts by removing the two bolts. Keep the hardware for reinstallation.

NOTE

The radome half has a double notch under the mount; the larger outer notch fits over the feedline and the smaller inner notch fits against the baymount.

NOTE

If retrofitting radomes to an older antenna (pre-1994), you will have to grind about 1/8" off the edges of the back channel (4, figure 1) of each radiator to make room for the thickness of the radome under the radiator.

- e. Carefully place the top radome half in place, slipping it under the radiator and up against the baymount.
- f. Slip the removed part of the radome mount into place. Bolt it to the radome half and then lightly clamp it to the feedline with a hose clamp (4).
- g. Carefully place the bottom radome half in place, slipping it under the radiator and up against the baymount, with its flange inside the larger flange of the upper radome half. Lightly clamp it to the feedline with a hose clamp (4). It may be necessary to squeeze the radome flanges together to start the nuts.
- h. Fasten the two radome halves together loosely with the 1/4"-20 hardware (5: a bolt, a nut, 2 flat washers and a lockwasher for each hole), starting near the feedline and working around both sides to the outer edge.
- i. Tighten all hardware securely.
- j. Seal the joint where the radome encircles the baymount with the silicone caulk supplied with the antenna.

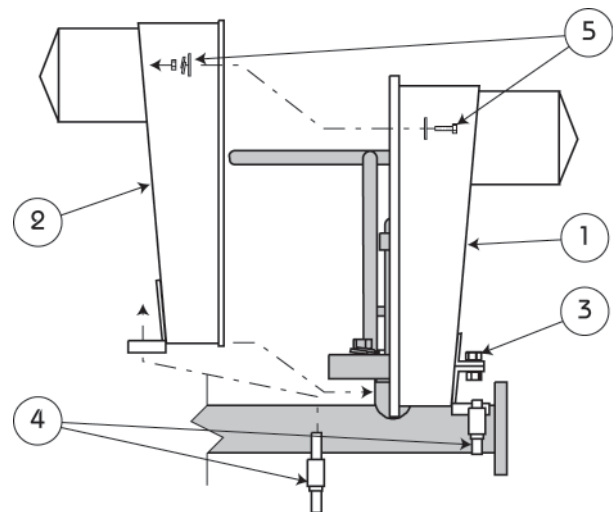


Figure 2. Installing the Radome

Document No. ts-6813_radome (0611)

A Division of Howell Laboratories, Inc., P. O. Box 389, Bridgton, Maine 04009 USA

(207) 647-3327

1-888-SHIVELY

Fax: (207)647-8273

www.shively.com

sales@shively.com

An Employee-Owned Company

Certified to ISO-9001:2000