

Securing Flex Cables for Antenna Systems

Securing

It is vital that runs of flex cable be secured firmly at frequent intervals. This is done to prevent mechanical damage from cables rubbing against each other and tower members.

Precautions

When securing cables, care must be taken not to crush or deform the outer conductor of the cable.

Procedure

To prevent mechanical damage, cables should be secured any time they pass within 4 inches of each other or a tower member.

Cable runs longer than the following should be secured. These are approximate; secure to tower members as actually available.

Cable Size	Run Length	* Secured About Every
1/2"	4 ft.	3 ft.
7/8"	6 ft.	4 ft.
1-5/8"	12 ft.	3 ft.

Various hangers and clamps are available from various sources for securing cable. Shively will supply cable clamps ("butterfly clamps") with your antenna in a quantity based on our best guess of your needs - but every tower and installation is unique! Therefore, additional cable clamps as required and round and angle tower member clamps should be supplied by your rigger.

NOTE

Shively will not be responsible for installations that don't meet our recommendations!

- **Cable to Flat, Round, or Angle Tower Member:** Use hangers and hose clamps, as shown on the enclosed sheet, to secure the cable.
- **Cable to Cable:** Use two cable clamps and a full-threaded bolt or threaded rod with nuts, as shown in figure 1 of this sheet, to secure the cables together.

* Recommended per flex cable manufacturer.

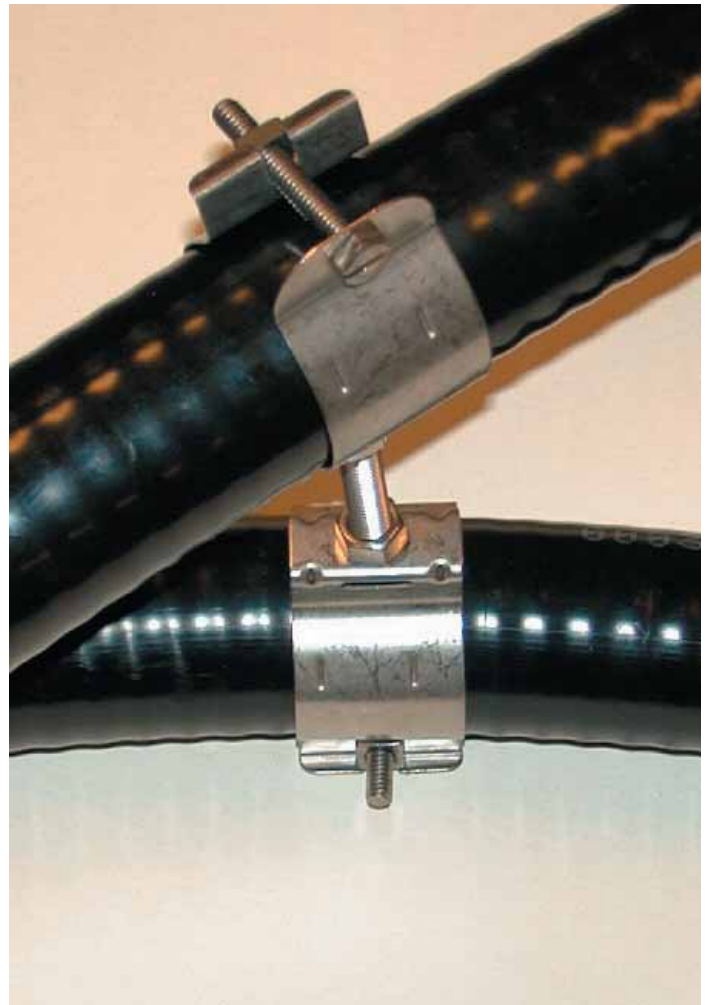


Figure 1. Recommended Cable-to-Cable Securing Arrangement

NOTE: not all parts supplied by Shively.

Document No. ts-cable_securing (0611)