

Retrofitting an XXL Radome on a Model 6813 Antenna

- a. Identify the top (wide mating flange) and bottom (narrow mating flange, drain holes) radome halves. The bay number marked on them must match the number on the feedline and radiator.

NOTE

The feedline comes with an extension in place. This extension, in effect, moves the feedline joints outside the radome, and thus allows you to mount the radome on the ground. You should treat the extended feedline section as a unit.

- b. If the radome was shipped with the radome mount in place, remove the mount and separate the radome halves before starting installation. Loosen the closure plates but leave them in place on the radome.
- c. Place four hose clamps loosely around the feedline, two above and two below the baymount flange. Mounting the saddle is easier if the clamps are in place first.
- d. Locate the mount on the feedline as shown, centered exactly opposite the baymount flange (use a ruler or a level to center it). The uppermost part of the mount should be one inch from the flange of the feedline extension.
- e. Using the four hose clamps, clamp the saddle of the mount to the feedline.
- f. Place the top radome half over the radiator and into the mount. The mount should extend between the radome and the closure plate.
- g. Place the bottom radome half over the radiator and feedline and into the top radome half, inserting its mount into its closure plate.
- h. Bolt the radome halves loosely to the mount with the mount bolts (3/8" with lock washers and flat washers).

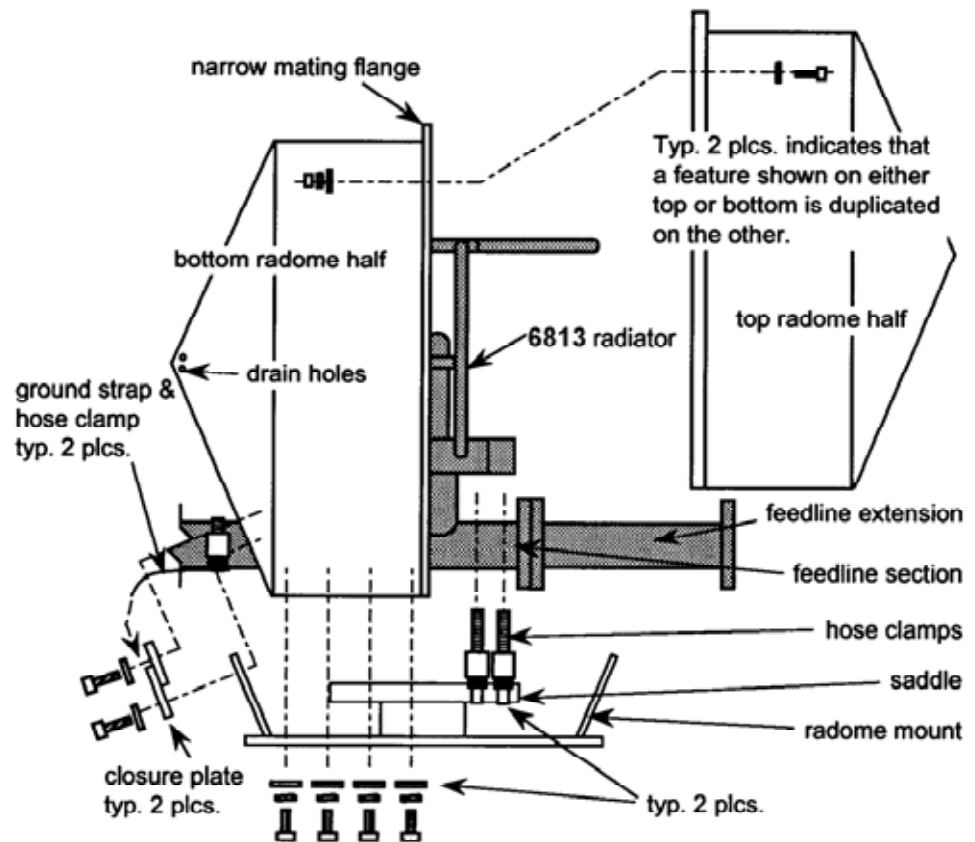
Secure the closure plates with the closure plate bolts (3/8" with lock washers and flat washers).

- i. Fasten the two radome halves together with the flange hardware (1/4" bolts with lock washers and two flat washers each), starting at the feedline side and working around both sides to the front.

NOTE

The radome flanges may have to be squeezed together slightly to start the nuts. Get all these nuts and bolts in place, then tighten them.

- j. Tighten the closure plate bolts and the mount bolts.
- k. Seal the closure plates and the joint where the radome encircles the feedline with the silicone caulk we supplied with the antenna.



Document No. ts-6813xxlr_radome (0411)

A Division of Howell Laboratories, Inc., P. O. Box 389, Bridgton, Maine 04009 USA

(207) 647-3327

1-888-SHIVELY

Fax: (207)647-8273

An Employee-Owned Company

www.shively.com

sales@shively.com

Certified to ISO-9001:2000